



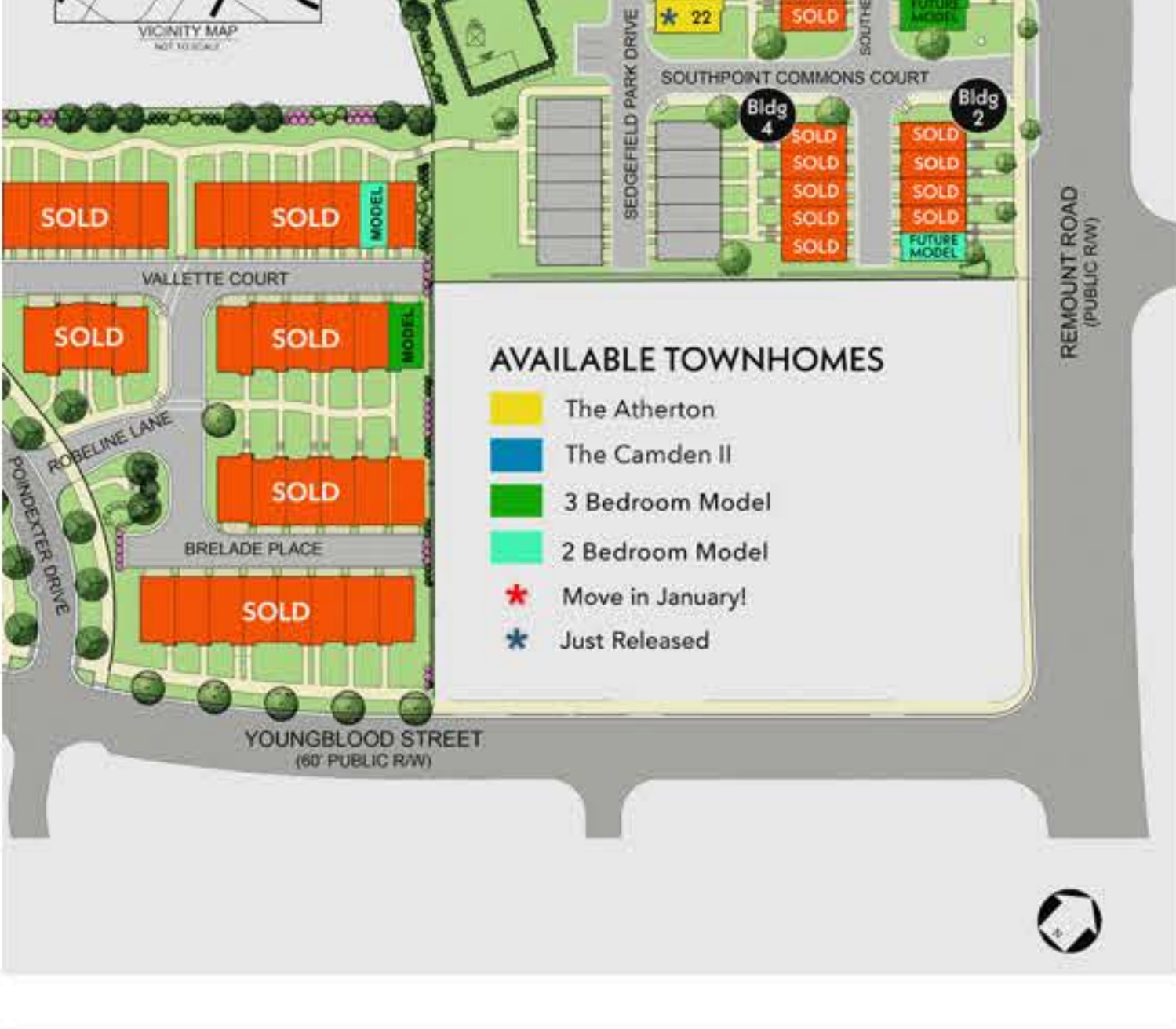
**NOVEMBER NEWSLETTER**

**SOUTHPOINT**  
AT SOUTH END

**THREE MORE UNITS RELEASED**

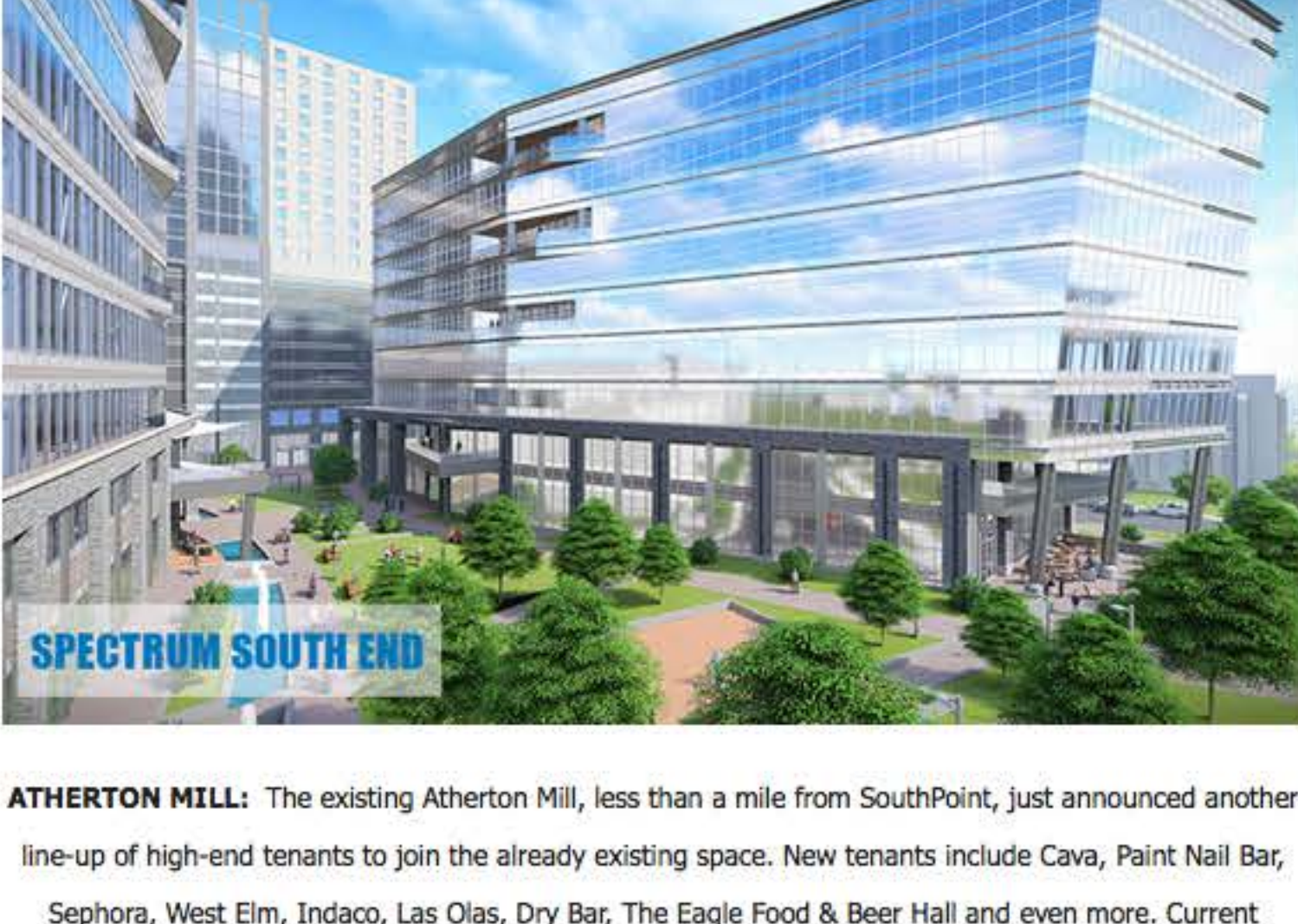
We are excited to announce the release of three, 3-bedroom units in Building 5! Each home features rooftop terraces with Uptown views, hardwood flooring throughout, privacy doors on the downstairs bedroom, and full tile showers in all bathrooms. **Schedule a hardhat tour with one of our agents today! Call Kevin Thompson or Jill Miller for more information: 704-944-9265**

[Click here to view pricing and floorplans.](#)



**South End News**

More mixed-use developments coming to South End!  
**Live at SouthPoint and enjoy the benefit of being in the center of it all.**



**ATHERTON MILL:** The existing Atherton Mill, less than a mile from SouthPoint, just announced another line-up of high-end tenants to join the already existing space. New tenants include Cava, Paint Nail Bar, Sephora, West Elm, Indaco, Las Olas, Dry Bar, The Eagle Food & Beer Hall and even more. Current tenants include Anthropologie, Warby Parker, Alton Lane, Free People, Living Kitchen, Vin Master, Ok-u Sushi, and Atherton Market. [Read more in the Charlotte Agenda here...](#)

**THE DESIGN DISTRICT:** Less than a mile from SouthPoint, Asana Partners is renovating about 300,000 SF of retail space across several older properties in South End. Superica, Jeni's Splendid Ice Creams, Pike's Soda Shoppe, Design within Reach and Girl Tribe are already opened in the Design Center, which will become part of the Design District. Flower Child, Barcelona Wine Bar, Clean Eat3, QCR Poushouse, Pins Mechanical Company and many others are coming soon to the District. [Read more in the Charlotte Agenda here...](#)

**SPECTRUM SOUTHWEND:** On the Corner of Carson Boulevard and South Tryon, just 3 light rail stops from SouthPoint, a 220,000 SF of office space is planned with an additional 40,000 square feet of ground floor retail. A 200 room boutique hotel will also accompany this project. [Read more in the Charlotte Agenda here...](#)

**THE RAILYARD:** Located on the corner of South Tryon and Bland Street, The Railyard will be 2 light rail stops from SouthPoint. The Railyard will consist of 8-floor office towers with 300,000 SF of office space and 30,000 SF of ground-floor retail. The popular Charlotte staple, Rhino Market, will be one of the future tenants. [Read more in the Charlotte Agenda here...](#)

**COMMON SQUARE:** An 8-story mixed-use development from Beacon Partners is coming to the corner of S. Tryon Street and West Boulevard, just one light rail stop from SouthPoint at South End. The development will consist of 130,000 SF of office and 10,000 SF of retail, a potential boutique hotel, and a large outdoor plaza that will connect West Boulevard to the future Wilmore Centennial Park. [Read more in the Charlotte Agenda here...](#)

**2151 HAWKINS:** A mixed-use development is planned for the 2151 Hawkins Street building, between Tremont Avenue and Rampart Street, less than one mile from SouthPoint. The project will contain 260,000 square feet of office space and up to 20,000 square feet of retail. [Read more in the Charlotte Business Journal here...](#)



**SOUTHPOINT**  
AT SOUTH END

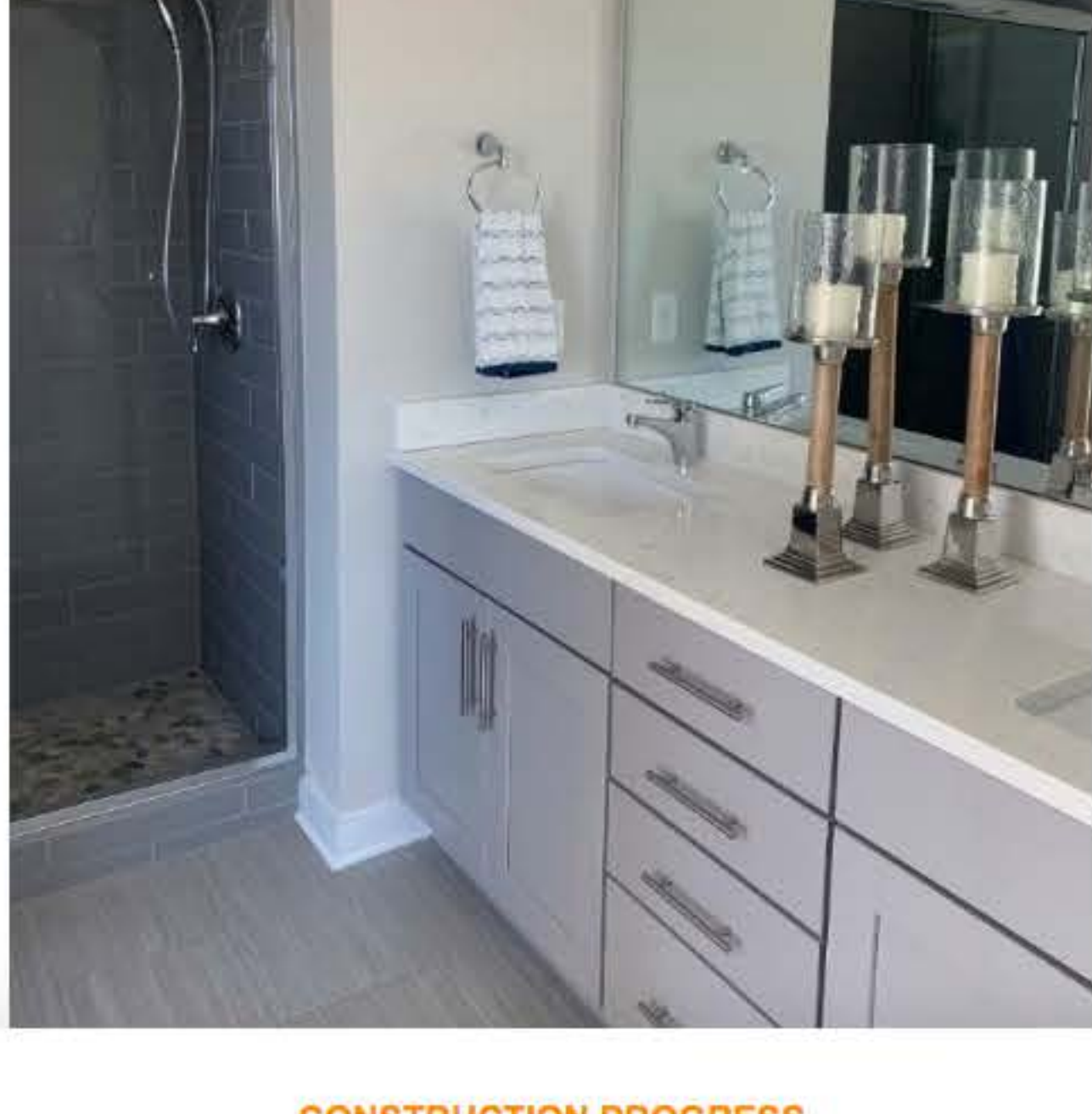
From group workouts to trivia night, there is always something to do in South End. Check out the South End calendar of events: [South End Events](#)

**SPA-INSPIRED MASTER BATHROOMS**

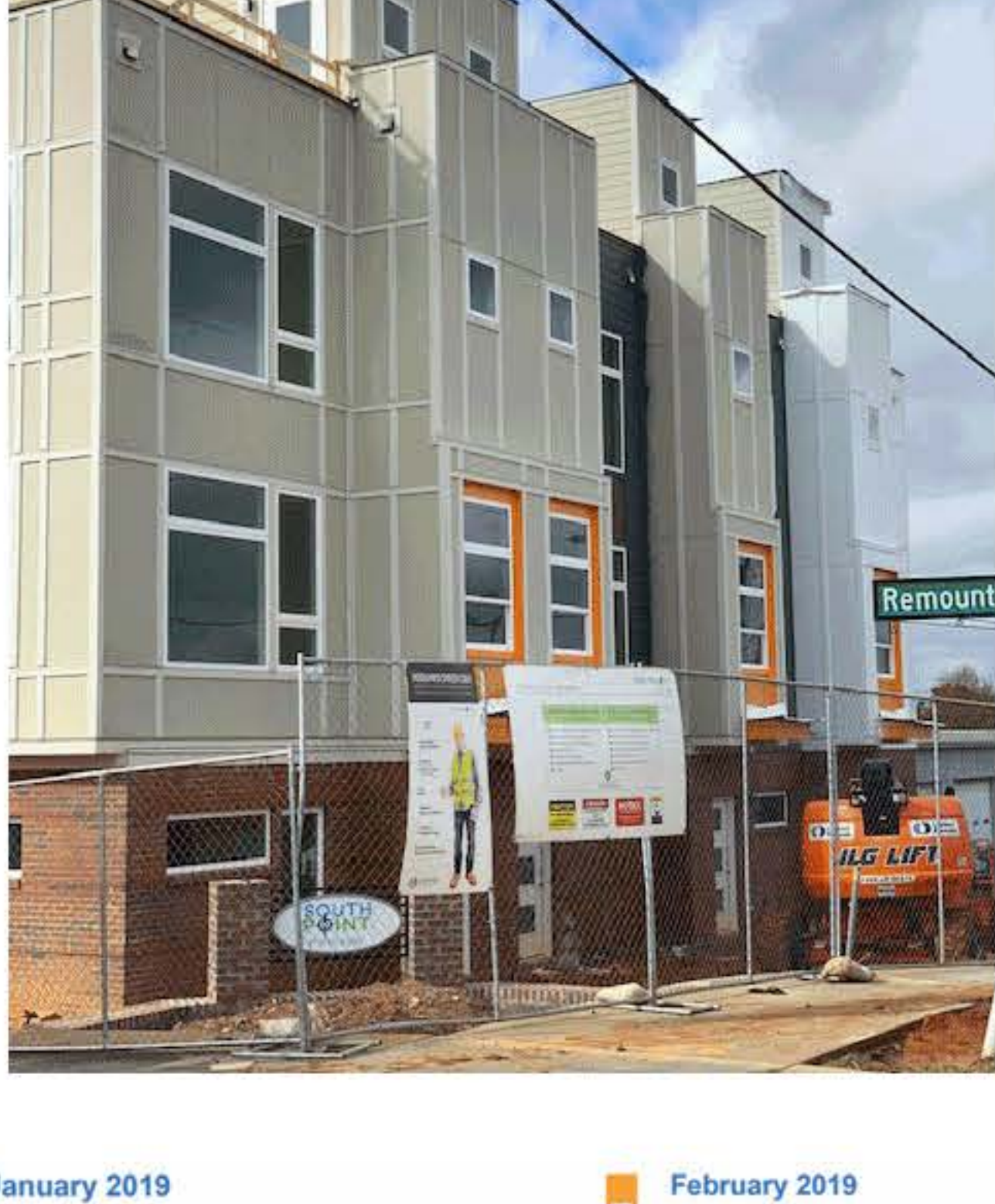
Schedule a tour to view our spa-inspired master bathrooms featuring a seated vanity space, quartz countertops, Delta shower fixtures, and beautiful tile shower walls.

**Call Kevin Thompson or Jill Miller for more information:**

**704-944-9265**



**CONSTRUCTION PROGRESS**



- |  |  |
|--|--|
| <p><b>BUILDING 1</b></p> <p><b>January 2019</b></p> <p>Completed: Cabinets and countertops</p> <p>In Progress: Final plumbing, HVAC, and electrical</p> <p>Next Steps: Paint</p> | <p><b>BUILDING 3</b></p> <p><b>February 2019</b></p> <p>Completed: Insulation</p> <p>In Progress: Drywall</p> <p>Next Steps: Interior trims and doors</p>            |
| <p><b>BUILDING 2</b></p> <p><b>February 2019</b></p> <p>Completed: Framing</p> <p>In Progress: Plumbing, HVAC, and electrical</p> <p>Next Steps: Insulation</p>                  | <p><b>BUILDING 4</b></p> <p><b>January 2019</b></p> <p>Completed: Interior trims and doors</p> <p>In Progress: Paint</p> <p>Next Steps: Cabinets and countertops</p> |

**TOUR OUR SALES MODEL**

**2430 Brelade Place**

**MODEL HOURS**

- Friday 11 AM - 1 PM
- Saturday 12 PM - 5 PM
- Sunday 12 PM - 5 PM

**OR call Kevin Thompson or Jill Miller to schedule a tour outside of model hours:**

**704-944-9265**



Copyright © 2018 South Point, All rights reserved.  
You signed up for this newsletter on our website.

Our mailing address is:  
Southpoint  
1221 Youngblood Rd  
Charlotte, NC 28203

[Add us to your address book](#)

Want to change how you receive these emails?  
You can [update your preferences](#) or [unsubscribe](#) from this list.